



RS 2520 “ProSpike Elite” Volleyball Standards:

SUPPLY ONLY:

RS 2520 single post ProSpike Elite Aluminum Volleyball posts as supplied by Royal Stewart Ltd., Winnipeg, MB.

Posts shall be made of 3” round aluminum tubing with telescoping insert complete with external 5/8” pin height adjustment mechanism.

Lower post assemblies and top inserts shall be powder coated / CS 500 Zinc for durability of finish.

Winched post shall be equipped with 1 only RS250HD 10,000 lb capacity heavy-duty manual winch c/w 1 1/2” strap leader. Non-winched end post shall have fully enclosed safety hook assemblies. Open hook assemblies not acceptable.

Available net heights shall be as recommended by the Canadian Volleyball Association.

<u>Category</u>	<u>Age at Dec. 31</u>	<u>Male</u>	<u>Female</u>
Mini V/Ball	9 – 12	2.10M	2.10M
Bantam	13 – 14	2.20M	2.10M
Midget	15 – 16	2.34M	2.10M
Juvenile	17 – 18	2.43M	2.24M
Junior	19 – 20	2.43M	2.24M
Senior	21 -	2.43M	2.24M

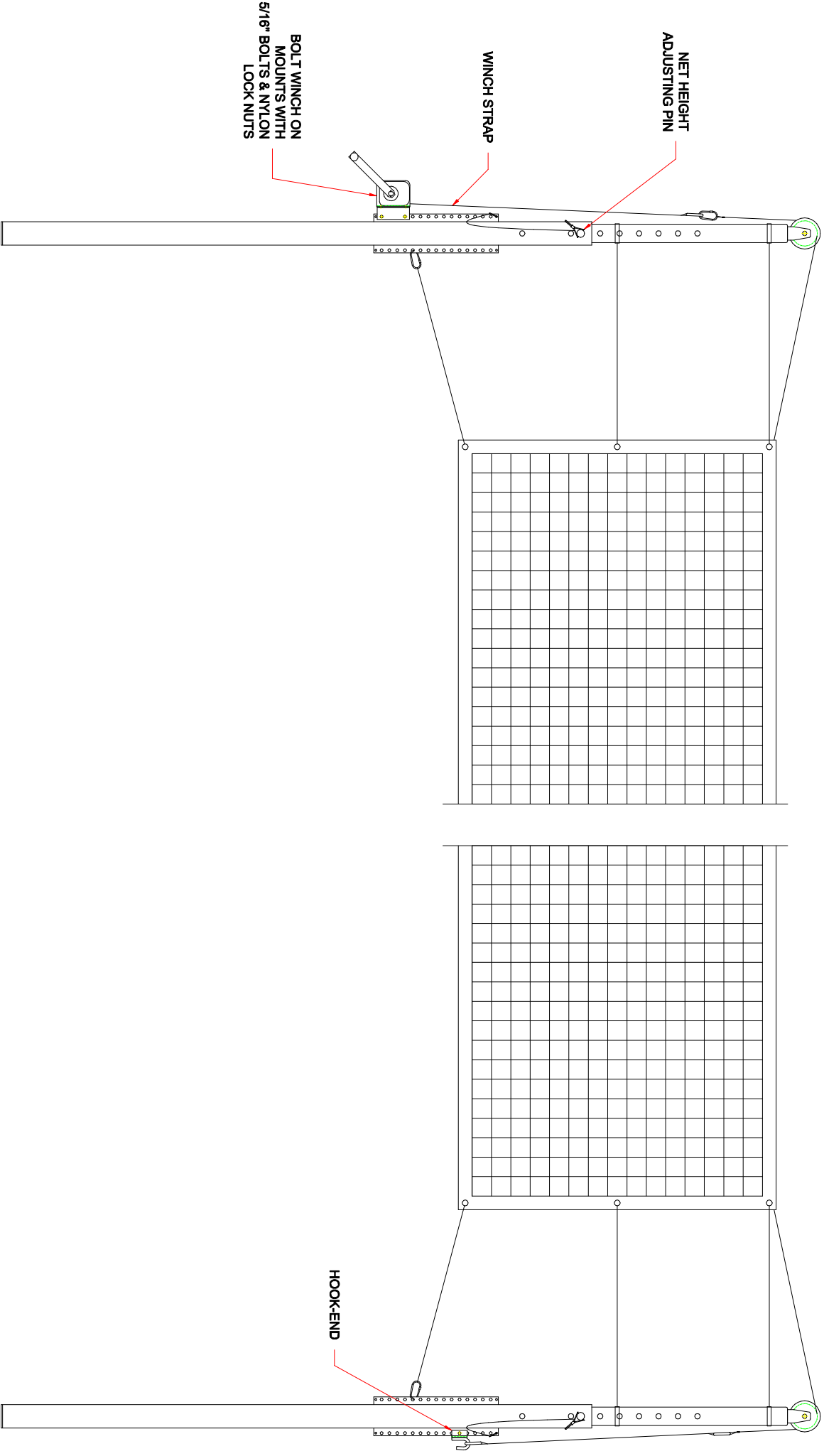
Additional Heights – 4” (102 mm) extra for training, 60” (1524 mm) height for Badminton.

Posts to be black in colour. Powder coat finish.

To fit RS 300 Floor Socket (synthetic flooring), RS 308 Floor Socket (hardwood flooring) and RS 308 S storage socket.

Center post c/w with one (1) only RS 250HD 10,000 lb capacity heavy-duty manual winch c/w 2” (51 mm) strap leader.

Full wrap-around post padding, integrated referee stand, RS 25 N volleyball nets are optional.



REV	A	DATE	08/03/11	DRAWING RELEASE	ET	BY	CHKD
				REVISIONS DESCRIPTION			

DO NOT SCALE DWG. US DIMENSIONS ARE IMPERIAL INCHES

WORK ORDER / TRACKING NO	QTY REQUIRED	ROYAL STEWART LTD. Your Sports Facility and Auditorium Specialists 240 I-XL Cres. (St. Clements Ind. Park) Lockport, Manitoba, Canada, R7A 3R9	
MATERIAL		SCALE	N.T.S.
TITLE	RS-2520 PRO SPIKE ELITE VOLLEYBALL POST	DRAWN BY	ET
		DATE	09/29/04
		DWG NO	
		DWG SHEET NO	
		ROUTING	

REV	A
-----	---